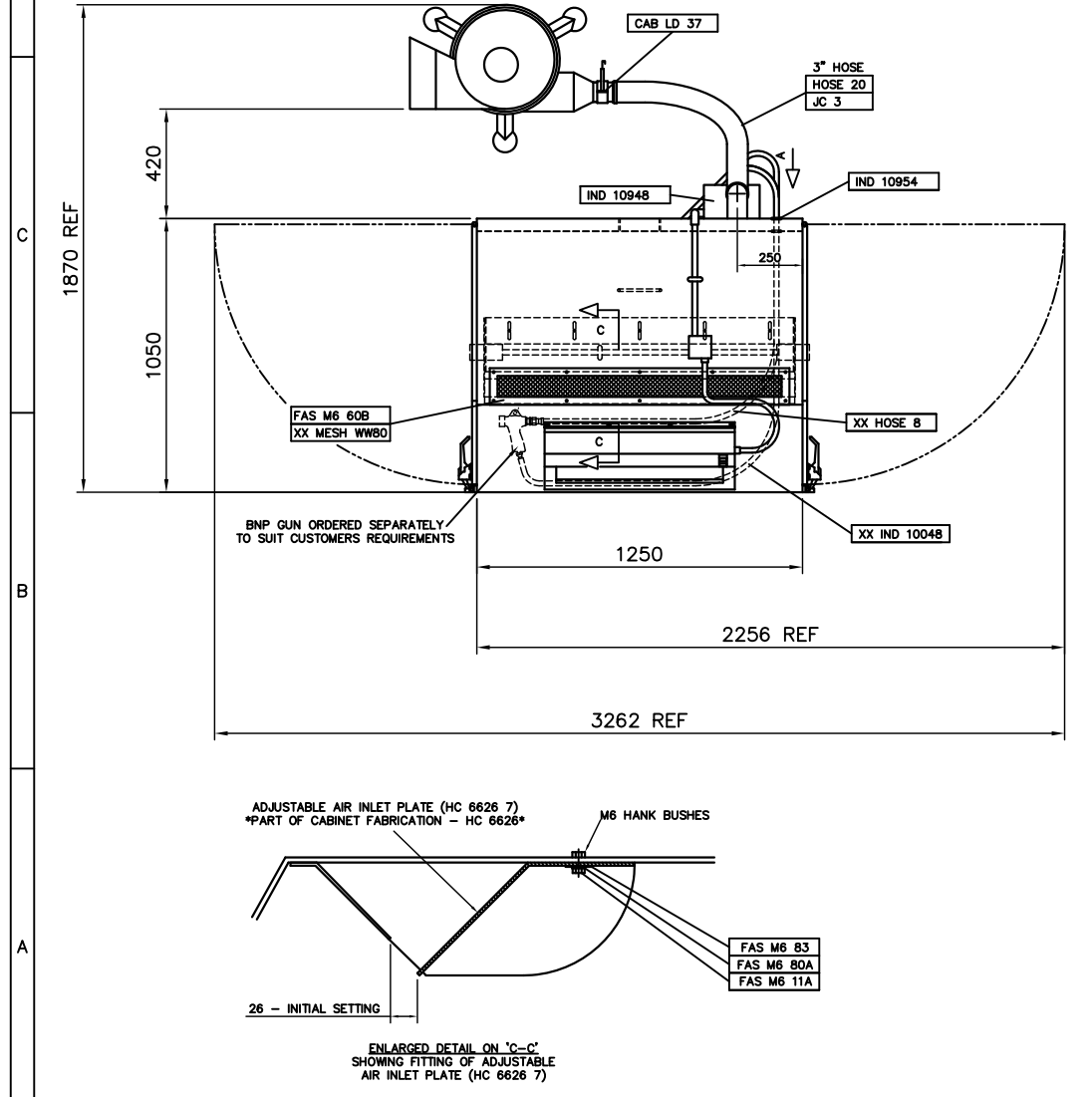


OPTIONAL ITEMS REQ. FOR IND 1250COMP XE1	PROD. CODE	DESCRIPTION
13118	100665	DUST COLLECTOR - 0.55KW
PE11023	11723	ZERO-BLOW FITTING SWIVEL
CAB LD 7	12417A	VALVE MEDIA METER ASSY *
CPFD021	A 16	TALPIECE 1/4"
IND 10092	A 17	O CLIP 1/2"
IND 10134	A 18	UNION NUT BRASS 1/4"
IND 10151	BW 3	COUPLING 1/2" MALE
IND 10159	CAB 16	LIGHT FITTING
IND 10178	CAB 196	LATCH - A2 DRAW STYLE (YELLOW)
MP1411	CAB 73A	VALVE - 3/8" 5/2 FOOT/SPRING
RCAMV 4	CAB A1	ENCLOSURE 80mm x 82mm x 85mm
MP 23	CAB A3	ADAPTOR - 3/8" x 1/2" HOSE
RCAMV 9	CAB LD 34	ADAPTOR - 1/2" x 1/2" HOSE
RM 23	CAB LD 37	ANTI ETOH SCREEN (5 PER SET)
XX HOSE 7	CAB LD 37	BLAST GATE DAMPER - 3"
	CAB LD16 800	1/2" SEPARATOR/REGULATOR
	CAB LD29	VIEWING WINDOW
	CHT 3	CABLE TIE
	E 2020	CLAMP - 1/2" HOSE
	FAS M6 11A	HEX. HEAD SET SCREW X 16L
	FAS M6 60B	SCREW - PAN HEAD X 16 LG
	FAS M6 63B	SCREW - PAN HEAD X 10LG
	FAS M6 80A	WASHER - PLATED
	FAS M6 83	MUDWING WASHER
	HC 5068	CABINET ARM HOLES - PLASTIC
	HC 5132	LIGHT MODULE FABRICATION
	HC 5132 2	WINDOW FRAME
	IND 10679	HOSE - 3" FLEXIBLE RUBBER STD
	IND 10823	CONDUIT - 21mm O/DIA NYLON
	IND 10824	SLEEVE/GLOVE ASSEMBLY - PAIR
	IND 10181	ADAPTOR 21mmO/D x M20 STRAIGHT
	IND 10178	MOUNTING PAD
	IND 10181	CONDUIT - 20mm O/DIA M.S.
	IND 10182	ELBOW - 20mm O/DIA CONDUIT
	IND 10183	COUPLER - 20mm O/DIA CONDUIT
	IND 10184	BUSH - 20mm HEX SHORT MALE
	IND 10187	SADDLE - 20mm CONDUIT
	IND 10189	TERM BOX-75x75x37 MS
	IND 10218	DUCT COUPLER - 3" MALE
	IND 10679	PUSH-BUTTON ASSEMBLY DOUBLE
	IND 10823	CONDUIT - FLEXIBLE SP20
	IND 10824	CONDUIT ADAPTOR STR. SP20/A20
	IND 10825	CONDUIT ADAPT.STR.SWIV.SP20/A20
	IND 10848	CONTROL PANEL - 0.55KW W/SOL.
	IND 10954	GROMMET - 19mm BORE
	IND 1250SSB	SUCTION CABINET SUB-BUILD
	JC 3	HOSE CLIP WORM DRIVE 70 - 89
	MP 1	VALVE 1/2" BALL VALVE
	MP 15	NIPPLE 1/2" M/F
	RCAMV 4	BULKHEAD ADAPTOR 1/4" C/W NUT
	RM 23	ADAPTOR 1/4"x1/4"
	SCR 4	NO 10 X 3/4"SELF TAPPER ZC PL
	XX HOSE 7	AIR HOSE 1/4"ID BLUE BARE
	XX HOSE 8	AIR HOSE 1/2"ID BARE
	XX IND 10048	HOSE - 1/2" I/D MATERIAL
	XX MESH WW80	MESH-80 MESH/IN x 4FT WIDE



ELECTRICAL REQUIREMENTS

FAN MOTOR - 0.55 KW ~ 415 V / 3 PH / 50 Hz - 1.5A FLC
 LIGHT MODULE - 36 W (2 x 18 W) ~ 240 V / 1 PH / 50 Hz
 SOLENOID VALVE ~ 240 V / 1 PH / 50 Hz (IND 1250COMP XE1)

AIR REQUIREMENTS

AIR SUPPLY ~ 80 PSI - CONSUMPTION AT 80 PSI
 5/16" JET = 33 CFM

PAINT SPECIFICATION

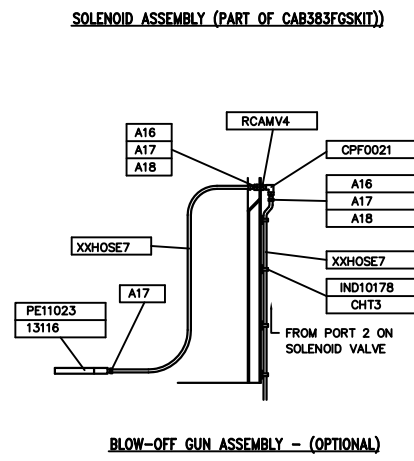
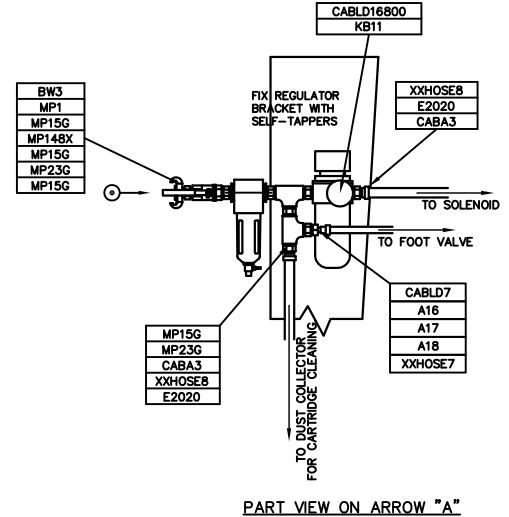
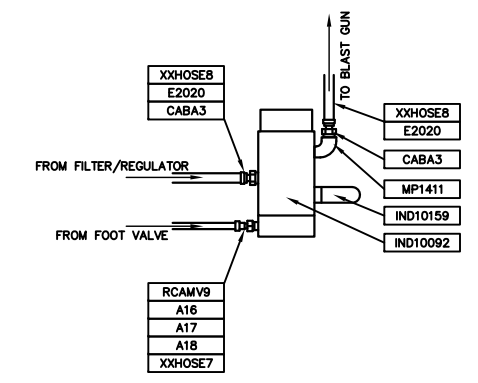
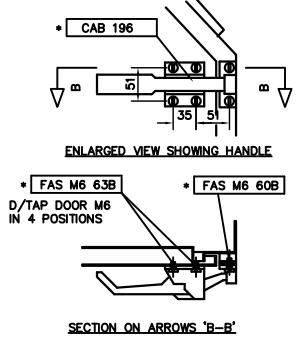
CLEMCO PREP & PAINT SPEC RAL6003 (SPRUCE GREEN)

REFERENCE DRAWINGS

FOR SUB-BUILD (IND 1250SSB) SEE HC-5524
 FOR ELECTRICAL DIAGRAM SEE HC-5414
 FOR PNEUMATIC DIAGRAM SEE HC-3118

TECHNICAL SPECIFICATION

- NOMINAL WORK CHAMBER SIZE = 1250(W) x 1000(D) x 1000(H)
- MAXIMUM WORKTABLE CAPACITY = 100 KG
- MINIMUM INTERIOR ILLUMINATION = 500 LUX.
- BLOW-OFF GUN SUPPLIED OPTIONAL
- AIR REGULATOR/WATER SEPARATOR SUPPLIED AS STANDARD
- 6 mm THK CLEAR POLISHED GEORGIAN WIRED GLASS TO BS 952 VIEWING WINDOW.
- SAFETY DOOR INTERLOCKS OPTIONAL



ISSUE No	MOD. No	DRAWN	CHECKED	DATE
4	4902	A.M.		25.09.2012
3	4687	A.M.		19.04.2010
2	4145	A.M.		14.07.2004
1	ORIGINAL	A.M.		09.11.99

- GENERAL NOTES**
- MATERIAL: COLD ROLLED MILD STEEL SHEET TO BS 1449 GRADE CR4 OR EQUIVALENT; HOT ROLLED MILD STEEL SECTIONS TO BS 4360 GRADE 43A OR EQUIVALENT. FINISH: SELF-COLOUR FOR PAINTING.
 - REMOVE ALL SHARP EDGES AND BURRS.
 - JOINTS AND CONSTRUCTION TO SUIT MANUFACTURERS' STANDARD PROCESSES.
 - DIMENSIONS AND TOLERANCES TO BS 308.
 - MACHINED SURFACES UNLESS STATED.
 - THREADS TO BS 3643 6H/6g OR BS 21 UNLESS STATED.
 - 7) *
 - 8) *
 - 9) *

WELDING

WELDING GENERALLY TO BS 5135 CAT. C & BS 4872 PT. 1
 ALL JOINTS & CONNECTIONS OF R.S. SECTIONS CONTINUOUS
 PLATE TO R.S. SECTION INTERMITTENT 75 WELD 100 GAP
 PLATE THICKNESS 1,6; 2,5; 3,5; 6; 8; 10 12 PLATE OVER 12
 WELD SIZE 3 6 10 AS SPECIFIED

TOLERANCES

	FABRICATION	MACHINING
HOLE CENTRES	±1mm	±0.25mm
DIAMETER	±3mm	±0.25mm
ANGULAR	±1°	±0.5°
LINEAR	±3mm	±0.5mm

COPYRIGHT

THIS DOCUMENT IS THE PRIVATE & CONFIDENTIAL PROPERTY OF HODGE CLEMCO LIMITED & MUST NOT BE REPRODUCED OR DISCLOSED TO ANY THIRD PARTY WITHOUT PRIOR WRITTEN CONSENT OF THE AFOREMENTIONED COMPANY.

HODGE CLEMCO LTD
 ORGREAVE DRIVE,
 SHEFFIELD,
 S13 9NR.
 TEL. 0114 2540600
 FAX. 0114 2540250

DO NOT SCALE - IF IN DOUBT ASK

TITLE G.A. IND 1250COMP XE SERIES
 SUCTION CABINET SYSTEM

CUSTOMER STOCK

DRAWN	DATE	DIMENSION	SCALE
A.M.	09.11.99	MM	1:15

DRAWING No HC-6653 SIZE A1